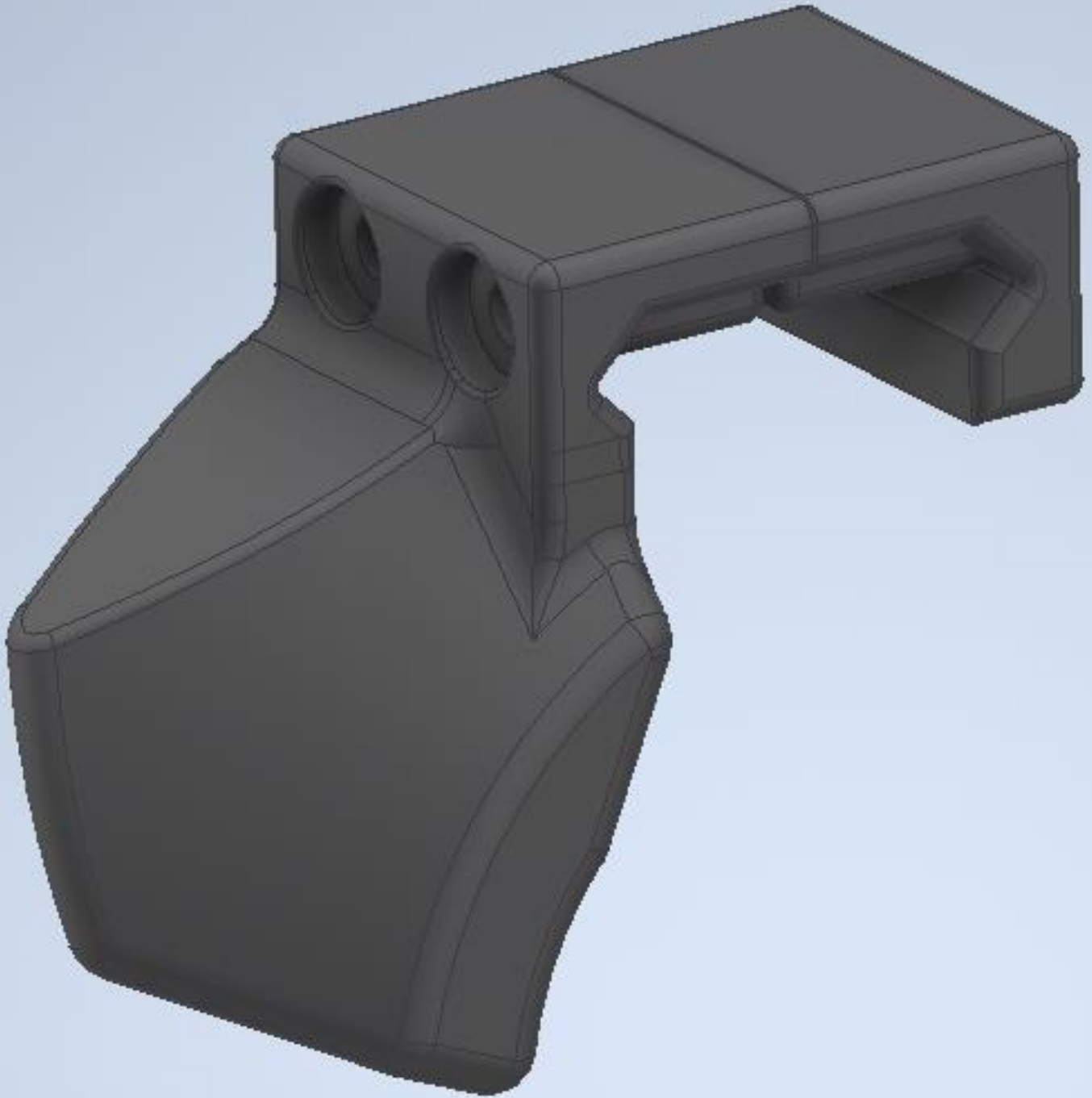


# **3D Printable Case Deflector**

## **(AR-15, Top Pic Rail Mounted)**



## Preface

This is a simple case deflector meant to mount on a T-91, though should work fine with AR15s as well. It mates up to the top pic rail on the receiver, and is designed to be low profile and fit under LPVOs.

Make sure you refer to the README for basic info/print settings for this doodad!

If you have found this tutorial useful, consider sending me Bitcoin to further development of this sort of thing – there is much more to explore in 3D printed guns, DIY guns, DIY ammo, etc.

<https://ctrlpew.com/donate-to-ivanthetroll/>

Remember that it is our shared responsibility to be safe and smart with firearms and show the world there is a peaceful way to own guns – take the time to get training, to learn basic (and advanced) safety rules, and to share the hobby with everyone interested – those most scared of guns in the hands of the people are often the ones who have no experience with guns in the first place.

## Table of Contents

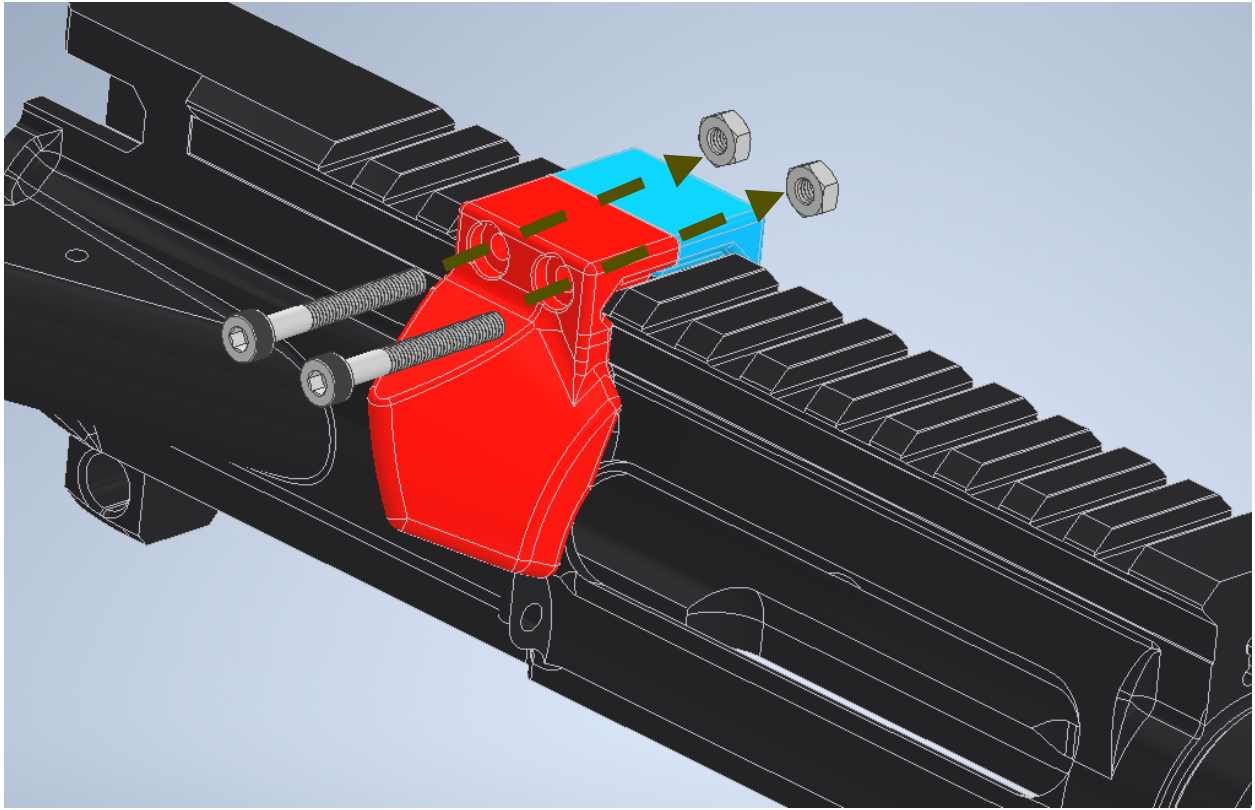
Preface .....	2
Shopping List .....	5
Build Tutorial .....	5
Step 1: Lay Out Your Parts/Prep Work.....	<b>Error! Bookmark not defined.</b>
Step 2: Install Magazine Catch .....	<b>Error! Bookmark not defined.</b>
Step 3: Install Rear Rail Block .....	<b>Error! Bookmark not defined.</b>
Step 4: Install Front Rail Block.....	<b>Error! Bookmark not defined.</b>
Step 5: Test slide to frame fitment .....	<b>Error! Bookmark not defined.</b>
Step 6: Install Ejector .....	<b>Error! Bookmark not defined.</b>
Step 7: Install AR15 Parts .....	<b>Error! Bookmark not defined.</b>
Step 8: Mounting the Slide .....	<b>Error! Bookmark not defined.</b>
FAQ/Troubleshooting .....	<b>Error! Bookmark not defined.</b>

## Shopping List

Pretty simple list. You'll need two M3x25mm bolts and two M3 nuts.

## Build Tutorial

Easiest build tutorial ever: print the two parts (their orientation is correct in the STL, print them and remove supports), set the deflector body just behind the ejection port, use the M3 bolts to secure the body using the clamp.



*Align Deflector Body (red) with the rear of the ejection port on the upper, affix it using the clamp (blue) and the M3 bolts and nuts.*